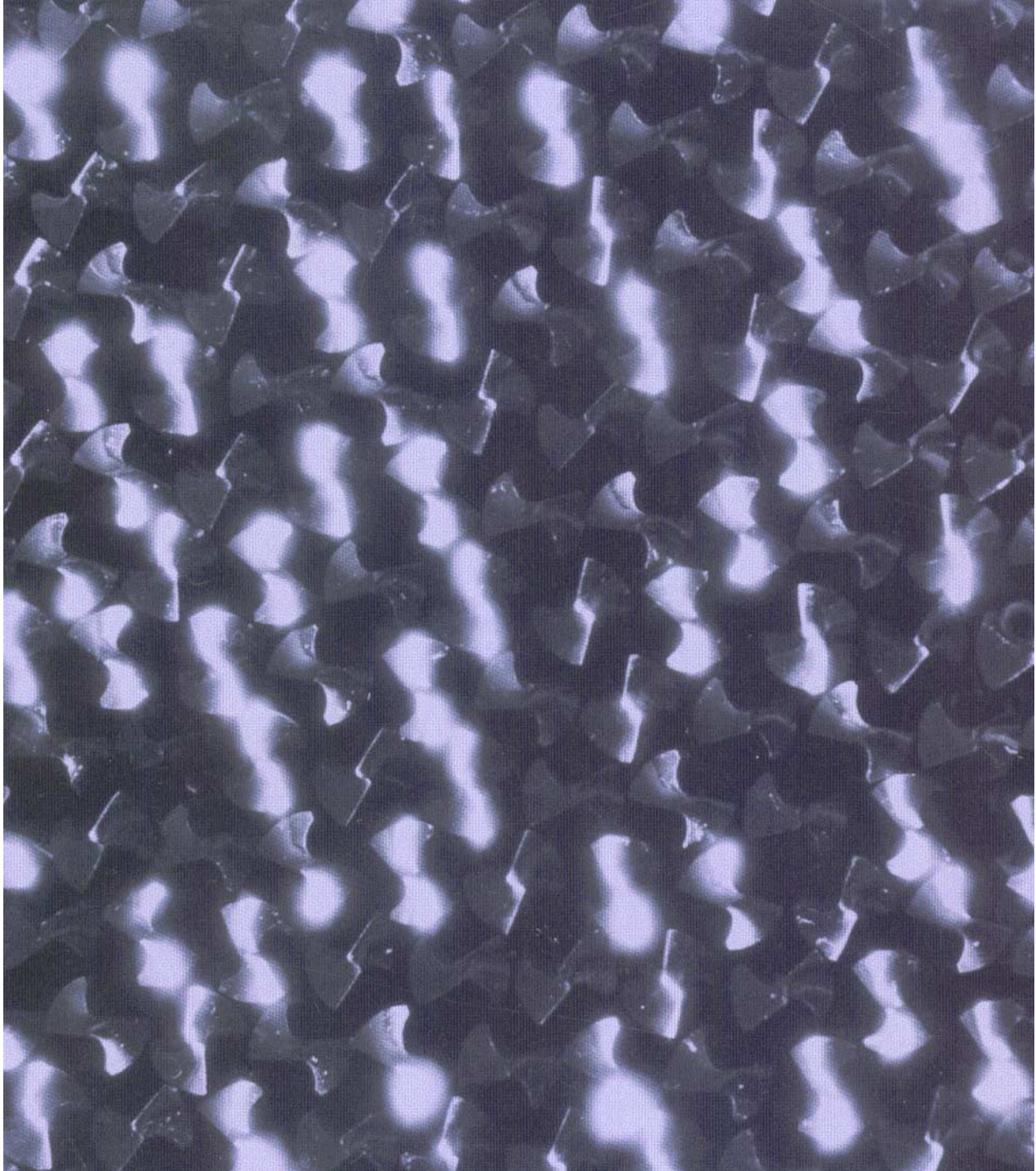


Winslow 1000CC

High Production Drill Point Grinder

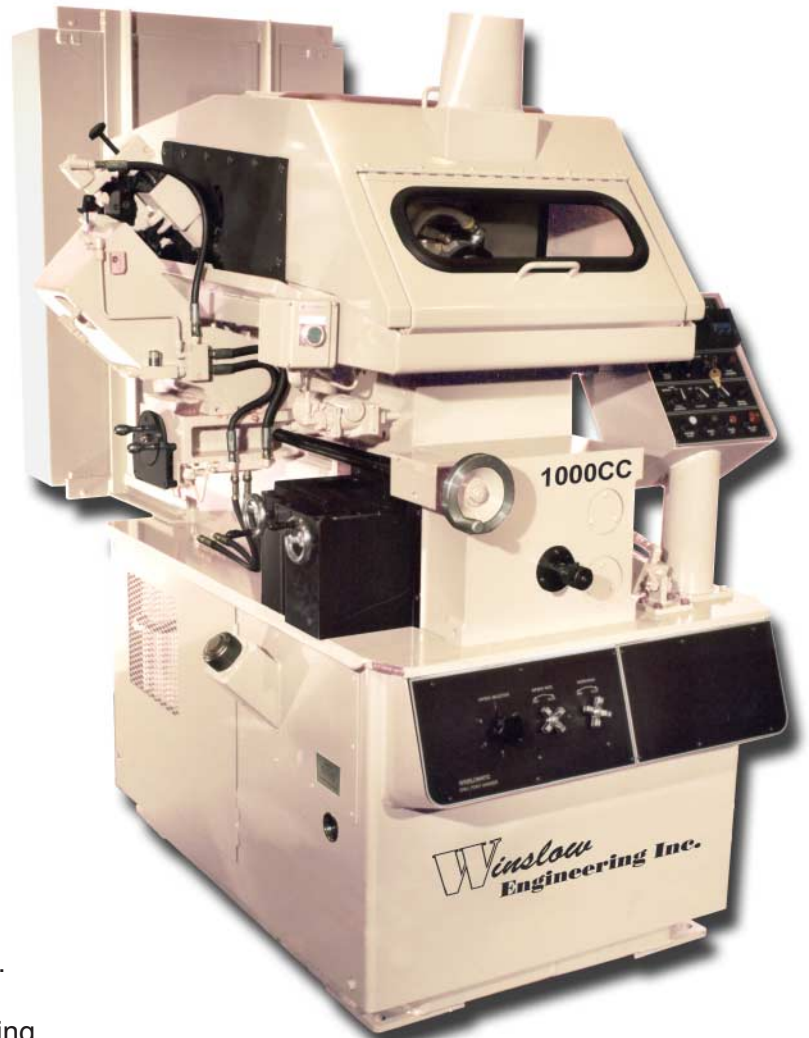


Winslow
Engineering Inc.

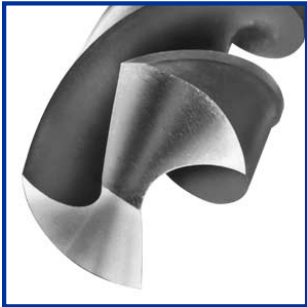
The 1000CC

High Production Machine Sharpens a Full Line of Twist Drills Automatically and with Superior Accuracy

- Sharpens up to 700 units per hour, with concentricity held to within .0005" (.013 mm) TIR. Production rates fluctuate depending upon drill size, finish, sparkout and stock removal.
- Grinds drills from 3/32" - 1/2" (2.4 - 13 mm) standard configuration; 3/64" to 3/32" (1.2 - 2.4 mm) diameters optional. Point angles from 90° to 140°.
- Versatile machine grinds three different geometries:
 - Helical
 - Wide Web Helical
 - Conventional
- Handles the three basic types of twist drills - jobber, screw machine and parabolic, with length to 6-1/2 inches.
- Automatic cycle offers consistent point accuracy. Drills are hopper loaded and automatically ejected from the workhead. Point generation, stock removal and drill ejection are completely automatic. Grinding wheel is automatically dressed after a preselected number of drills have been ground.

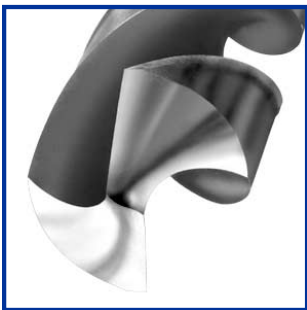


The 1000CC Automatic Machine for Manufacturers of Conventional and Helical Points



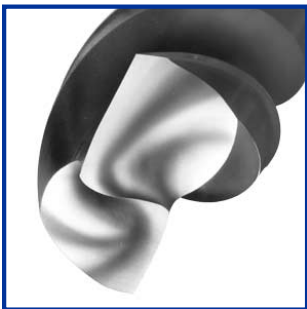
Conventional

Primary grind for the production of split points.



Helical

Exclusive Winslow Helical grind features S-shaped crown chisel. Excellent self centering. Reduces thrust increases feedrates, extends drill life, improves hole quality.



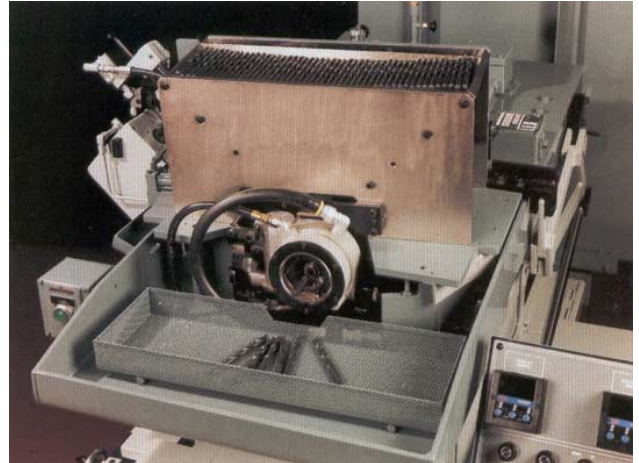
Wide Web Helical

Grind helical points on wide web drills for improved drilling. All the benefits of helical point *plus* eliminates need for splitting or web thinning.



Timer "V" Block

The unique "V" block and timer design assures consistent and repeatable results from drill to drill.



Hopper and Workhead

Large hopper allows long periods of unattended machine operation. Hydrostatic workhead, with bushing and restrainer collet, provides repeated accuracy from drill to drill.



Control Panel

Automatic spark out counter controls quality of surface finish. Auto dresser automatically dresses the grinding wheel after a preselected number of drills have been sharpened. Machine cycles automatically after loading and dressing.

Winslow Engineering... for Every Drill Grinding Need

Model HC Drill Point Grinder

Extremely versatile, semi-automatic machine from 1/16" (1.55 mm) to 1-1/2" (38.0 mm) at a rate up to 100 per hour. Handles right-hand and left-hand drills, point angles from 60° to 160°. Capable of grinding conventional, Winslow-Helical, Racon®, Bickford Point®, four-facet and split points.



Model 520 Drill Point Splitter

Automatic wheel dressing and infeed cycle permits accurate splitting at a rate up to 350 per hour. Splits drills from 3/32" (2.4 mm) to 1/2" (12.5 mm); web thins drills from 5/16" (8.0 mm) to 3/4" (19.0 mm). Meets or exceeds all NAS 907 specifications.



Model 525 Drill Point Splitter

Automatic chucking and indexing of the drill permits precision splitting at up to a rate up to 400 per hour. Splits drills from 1/16" (1.55 mm) to 1" (25.5 mm); web thins drills from 1/8" (3.2 mm) to 1" (25.5 mm). Meets or exceeds all NAS 907 specifications.



Model 100C Automatic High Production

Sharpens up to 500 units per hour with high accuracy. Grinds drills from 1/16" (1.55 mm) to 1-1/2" (38.0 mm), point angles from 90° to 140°. Automatic cycle and wheel dresser. Point styles include conventional, Winslow-Helical, Racon®, Bickford Point®, core drills, step drills and taps.



Model HR Drill Point Grinder

Automatic cycle sharpens drills from 1/16" (1.55 mm) to 1-1/2" (38.0 mm) at a rate up to 120 per hour. Handles right-hand and left-hand drills, point angles from 60° to 160°. Generates conventional, Winslow-Helical, Racon®, Bickford Point® and split points.



Winslow Engineering Inc.
N7677 Peebles Lane
Fond du Lac, WI 54935

Phone: (920) 921-6404
Fax: (920) 921-6409
www.winsloweng.com

Winslow
Engineering Inc.